

FIG. 1

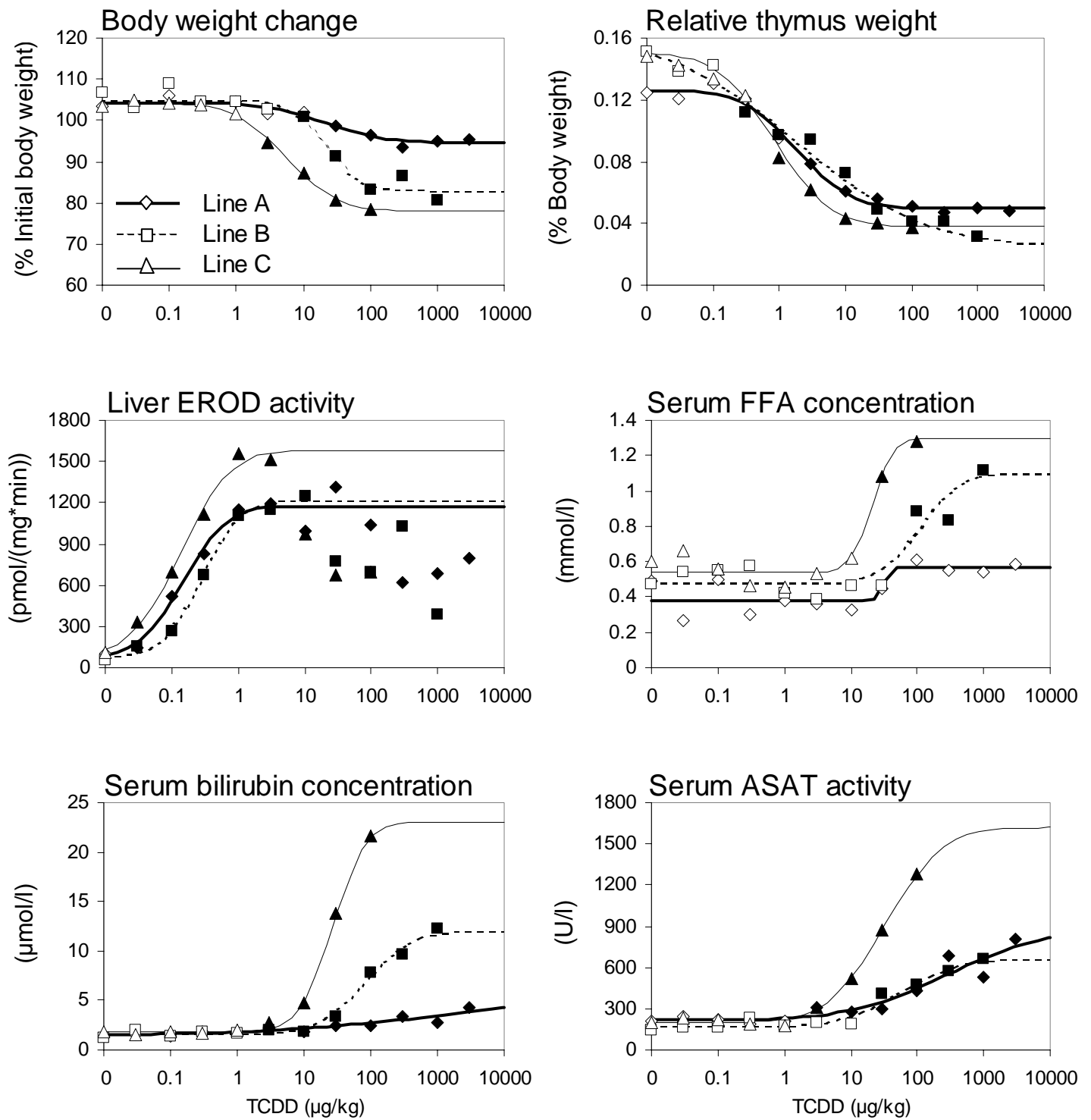
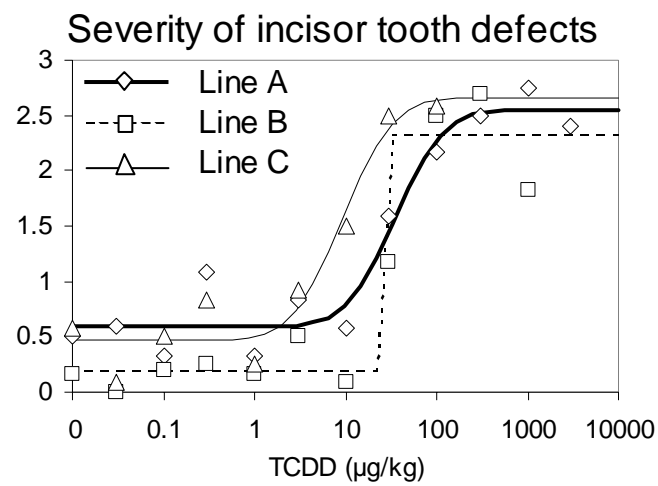


FIG. 2



LEGENDS TO FIGURES

Fig. 1. Modeled dose-responses and group means (5-6 rats per treatment group) of relative body weight change, body-weight-related thymus weight, liver S9 ethoxyresorufin O-deethylase (EROD) activity, serum free fatty acid concentration (FFA), serum aspartate aminotransferase (ASAT) activity, and serum total bilirubin concentration in line A, B, and C rats 8 days ~~postexposure.~~ Statistically after exposure to a single oral dose of TCDD. Dose-response curves were fitted assuming a shape of cumulative normal distribution after logarithmic dose transformation and using the least squares method with sequential quadratic programming. For group means statistically significant ($P < 0.05$) differences versus corresponding controls are depicted with solid symbols. The error bars are not included to keep the figures more readable.

Fig. 2. Modeled dose-responses and group means (5-6 rats per treatment group) of mean severity of incisor tooth defects in line A, B, and C rats 8 days ~~postexposure.~~ after exposure to a single oral dose of TCDD. Dose-response curves were fitted assuming a shape of cumulative normal distribution after logarithmic dose transformation and using the least squares method with sequential quadratic programming. The error bars are not included to keep the figures more readable.